



## Design: Matisse

### PRODUCT

Type: Hand Tufting  
Construction: Tufting Frame

### COMPOSITION

Pile: 100% Viscose  
Yarn Origin: Portugal  
Primary backing: 100% Polyester Latex:  
100% latex  
Backing: 100% Polyester

### WEIGHTS AND THICKNESS

Maximum yarn pile height: 18 mm  
Total thickness including backing: 20 mm  
Pile weight: 4.5 kg/m<sup>2</sup>  
Total weight: 5.5 kg/m<sup>2</sup>

### SIZES

Width: 10.5m Length: No limit

### APPLICATION

Rugs with high resistance to wear, appropriate for residential market or private areas in the hotel sector.

### INSTALLATION

Plain, dry and clean surface.  
Overall adhesion or stretched.

### OTHER CHARACTERISTICS

Capacity of resistance to light: 5 or above  
Colour fastness: 4 or above  
Treatment anti-moth: Incorporated under request  
Resistance to traffic: High

### MAINTENANCE

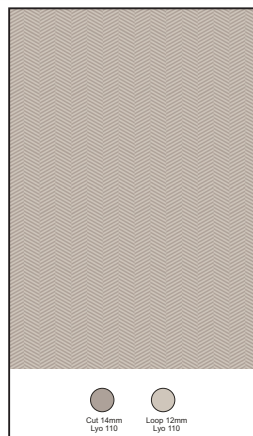
Vacuum regularly - blot stains immediately with absorbing white paper towel until it is dry.  
Do not scrub.  
We recommend the services of a professional carpet cleaner.

### WASHING INSTRUCTIONS

Do not use bleach / Do not wash in the washing machine / Do not iron / Do not dry-clean / Contact specialised cleaning companies.

### CERTIFICATION

Fire Classification - EN 13501-1:2010-  
Cfl-s1 certified by LNEC



**Matisse**

Our rugs are manufactured by Hand and will show irregularities.

These irregularities could be due to yarn and colour variations and a combination of the cut and loop pile or carving techniques used.

Colours can vary from dye batch to dye batch and will appear different in certain lights.

Samples of the chosen design, yarn and colours are recommended as the yarn used is then recorded for the order.

Care and Cleaning details can be found on the website.

All our rugs are made to order and each one is different and unique.