

*Sophisticated
Hand-tufted
Rug Collection*



THE RUG STORY
BY STÉPHANIE BOUQUET



The Rug Story by Stephanie Bouquet.

We create stories in our minds, there's always something behind what we think and how we see things. Ideas are brought together by the possibilities of choice. Our Collection is simple, but it allows the mind to wander. Creative designs of cut and loop texture, available in 4 different yarn compositions and 246 colour options. It starts as one colour, but now the adventure begins.

Why not add more or even 3, what about 10, how about mixing the yarns, don't want the loop, can I have just the cut pile, where will it end ?

We now add our new design Cartier Plain. A sumptuous, textured plain, woven in our new Lucca yarn and 'J' weave construction. Available in one colour or a mix of upto a maximum of 7 Bamboo Lucca (Viscose) colours, 6 colours of Botanical Silk (Lyocell), 3 colours of Contract Botanical Silk (Lyocell), and 10 New Zealand Wool colours. Any pile height from 12mm to 45mm, either as a plain or in the 'J' weave construction".

In addition to Cartier Plain, we have 7 new designs to complement our existing collection. Choose the design and colours, order a sample and build your own collection. The website has a "New Collection" section where you can download the Cads and start your journey.

And so the story goes on, a pile of discovery, a cut above, a loop around, a tuft of life !!



Design: Cartier

PRODUCT

Type: Hand Tufting
Construction: Tufting Frame

COMPOSITION

Pile: 100% Bamboo Lucca (Viscose)
Yarn Origin: Portugal
Primary backing: 100% Polyester Latex:
100% latex
Backing: 100% Polyester

WEIGHTS AND THICKNESS

Maximum yarn pile height: 45 mm
Total thickness including backing: 47 mm
Pile weight: 4.5 kg/m²
Total weight: 5.5 kg/m²

SIZES

Width: 10.5m Length: No limit

APPLICATION

Rugs with high resistance to wear, appropriate for residential market or private areas in the hotel sector.

INSTALLATION

Plain, dry and clean surface.
Overall adhesion or stretched.

OTHER CHARACTERISTICS

Capacity of resistance to light: 5 or above
Colour fastness: 4 or above
Treatment anti-moth: Incorporated
under request Resistance to traffic: High

MAINTENANCE

Vacuum regularly - blot stains immediately with absorbing white paper towel until it is dry.
Do not scrub.

We recommend the services of a professional carpet cleaner.

WASHING INSTRUCTIONS

Do not use bleach / Do not wash in the washing machine / Do not iron / Do not dry-clean / Contact specialised cleaning companies.

CERTIFICATION

Fire Classification - EN 13501-1:2010-
Cfl-s1 certified by LNEC



Cartier

Our rugs are manufactured by hand and will show irregularities.

These irregularities could be due to yarn and colour variations and a combination of the cut and loop pile or carving techniques used.

Colours can vary from dye batch to dye batch and will appear different in certain lights.

Samples of the chosen design, yarn and colours are recommended as the yarn used is then recorded for the order.

Care and Cleaning details can be found on the website.

All our rugs are made to order and each one is different and unique.



Design: Grimaldi

PRODUCT

Type: Hand Tufting
Construction: Tufting Frame

COMPOSITION

Pile: 100% Botanical Silk (Lyocell)
Yarn Origin: Portugal
Primary backing: 100% Polyester Latex:
100% latex
Backing: 100% Polyester

WEIGHTS AND THICKNESS

Maximum yarn pile height: 18 mm
Total thickness including backing: 20 mm
Pile weight: 4.5 kg/m²
Total weight: 5.5 kg/m²

SIZES

Width: 10.5m Length: No limit

APPLICATION

Rugs with high resistance to wear,
appropriate for residential market or
private areas in the hotel sector.

INSTALLATION

Plain, dry and clean surface.
Overall adhesion or stretched.

OTHER CHARACTERISTICS

Capacity of resistance to light: 5 or
above Colour fastness: 4 or above
Treatment anti-moth: Incorporated
under request Resistance to traffic: High

MAINTENANCE

Vacuum regularly - blot stains
immediately with absorbing white paper
towel until it is dry.
Do not scrub.
We recommend the services of a
professional carpet cleaner.

WASHING INSTRUCTIONS

Do not use bleach / Do not wash in the
washing machine / Do not iron / Do not
dry-clean / Contact specialised cleaning
companies.

CERTIFICATION

Fire Classification - EN 13501-1:2010-
Cfl-s1 certified by LNEC



Grimaldi

Our rugs are manufactured by hand and will show irregularities.

These irregularities could be due to yarn and colour variations and a combination
of the cut and loop pile or carving techniques used.

Colours can vary from dye batch to dye batch and will appear different in certain lights.

Samples of the chosen design, yarn and colours are recommended as the yarn used is then recorded for the order.

Care and Cleaning details can be found on the website.

All our rugs are made to order and each one is different and unique.



Design: Matisse

PRODUCT

Type: Hand Tufting
Construction: Tufting Frame

COMPOSITION

Pile: 100% Botanical Silk (Lyocell)
Yarn Origin: Portugal
Primary backing: 100% Polyester Latex:
100% latex
Backing: 100% Polyester

WEIGHTS AND THICKNESS

Maximum yarn pile height: 18 mm
Total thickness including backing: 20 mm
Pile weight: 4.5 kg/m²
Total weight: 5.5 kg/m²

SIZES

Width: 10.5m Length: No limit

APPLICATION

Rugs with high resistance to wear, appropriate for residential market or private areas in the hotel sector.

INSTALLATION

Plain, dry and clean surface.
Overall adhesion or stretched.

OTHER CHARACTERISTICS

Capacity of resistance to light: 5 or above
Colour fastness: 4 or above
Treatment anti-moth: Incorporated
under request Resistance to traffic: High

MAINTENANCE

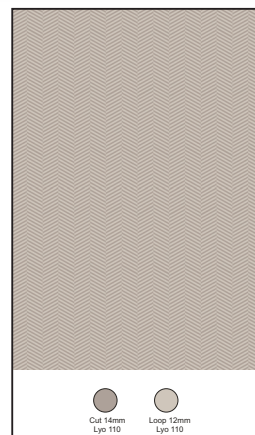
Vacuum regularly - blot stains immediately with absorbing white paper towel until it is dry.
Do not scrub.
We recommend the services of a professional carpet cleaner.

WASHING INSTRUCTIONS

Do not use bleach / Do not wash in the washing machine / Do not iron / Do not dry-clean / Contact specialised cleaning companies.

CERTIFICATION

Fire Classification - EN 13501-1:2010-
Cfl-s1 certified by LNEC



Matisse

Our rugs are manufactured by hand and will show irregularities.

These irregularities could be due to yarn and colour variations and a combination of the cut and loop pile or carving techniques used.

Colours can vary from dye batch to dye batch and will appear different in certain lights.

Samples of the chosen design, yarn and colours are recommended as the yarn used is then recorded for the order.

Care and Cleaning details can be found on the website.

All our rugs are made to order and each one is different and unique.



Design: Monet

PRODUCT

Type: Hand Tufting
Construction: Tufting Frame

COMPOSITION

Pile: 100% Botanical Silk (Lyocell)
Yarn Origin: Portugal
Primary backing: 100% Polyester
Latex: 100% latex
Backing: 100% Polyester

WEIGHTS AND THICKNESS

Maximum yarn pile height: 18 mm
Total thickness including backing: 20 mm
Pile weight: 3.9 kg/m²
Total weight: 5.5 kg/m²

SIZES

Width: 10.5m Length: No limit

APPLICATION

Rugs with high resistance to wear, appropriate for residential market or private areas in the hotel sector.

INSTALLATION

Plain, dry and clean surface.
Overall adhesion or stretched.

OTHER CHARACTERISTICS

Capacity of resistance to light: 5 or above
Colour fastness: 4 or above
Treatment anti-moth: Incorporated
under request Resistance to traffic: High

MAINTENANCE

Vacuum regularly - blot stains immediately with absorbing white paper towel until it is bone dry.
Do not scrub.
We recommend the services of a professional carpet cleaner.

WASHING INSTRUCTIONS

Wash by hand until 40° C / Do not use bleach / Do not wash in the washing machine / Do not iron / Do not dry-clean / Contact specialised cleaning companies.

CERTIFICATION

Fire Classification - EN 13501-1:2010 - Dfl-s1



Monet

Our rugs are manufactured by hand and will show irregularities.

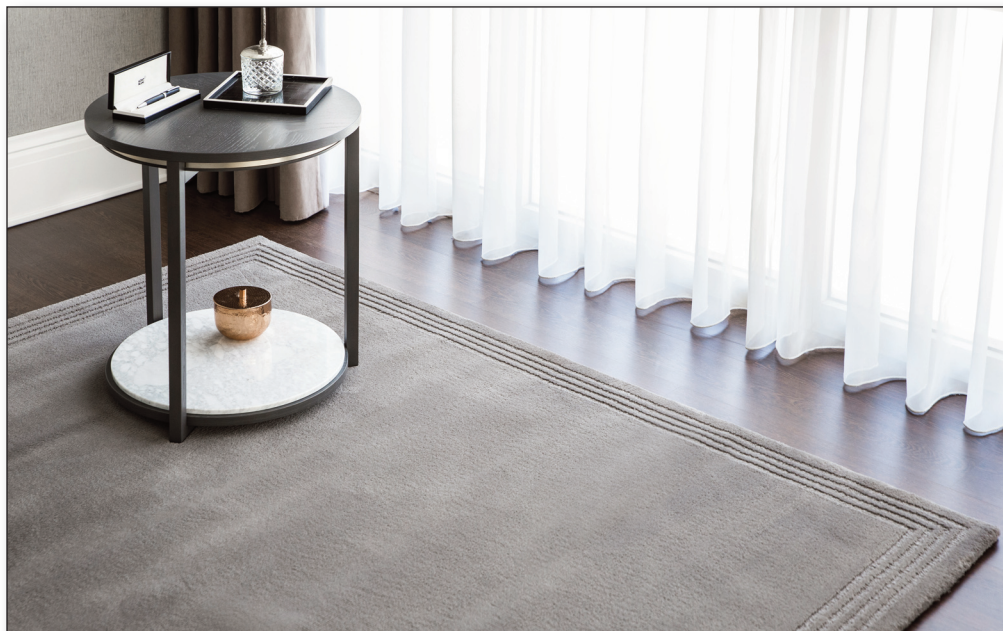
These irregularities could be due to yarn and colour variations and a combination of the cut and loop pile or carving techniques used.

Colours can vary from dye batch to dye batch and will appear different in certain lights.

Samples of the chosen design, yarn and colours are recommended as the yarn used is then recorded for the order.

Care and Cleaning details can be found on the website.

All our rugs are made to order and each one is different and unique.



Design: Pissaro

PRODUCT

Type: Hand Tufting
Construction: Tufting Frame

COMPOSITION

Pile: 100% New Zealand Thin Wool
Origin: Portugal
Primary backing: 100% Polyester Latex:
100% latex
Backing: 100% Polyester

WEIGHTS AND THICKNESS

Maximum yarn pile height: 18 mm
Total thickness including backing: 20 mm
Pile weight: 4 kg/m²
Total weight: 5.5 kg/m²

SIZES

Width: 10.5m Length: No limit

APPLICATION

Rugs with high resistance to wear,
appropriate for residential market or
private areas in the hotel sector.

INSTALLATION

Plain, dry and clean surface.
Overall adhesion or stretched.

OTHER CHARACTERISTICS

Capacity of resistance to light: 5 or
above Colour fastness: 4 or above
Treatment anti-moth: Incorporated
under request Resistance to traffic: High

MAINTENANCE

Vacuum regularly - blot stains
immediately with absorbing white paper
towel until it is dry.
Do not scrub.
We recommend the services of a
professional carpet cleaner.

WASHING INSTRUCTIONS

Wash by hand until 40° C / Do not use
bleach / Do not wash in the washing
machine / Do not iron / Do not dry-
clean / Contact specialised cleaning
companies.

CERTIFICATION

Fire Classification - EN 13501-1:2010-
Cfl-s1 certified by LNEC



Pissaro

Our rugs are manufactured by hand and will show irregularities.

These irregularities could be due to yarn and colour variations and a combination of the cut and loop pile or carving techniques used.

Colours can vary from dye batch to dye batch and will appear different in certain lights.

Samples of the chosen design, yarn and colours are recommended as the yarn used is then recorded for the order.

Care and Cleaning details can be found on the website.

All our rugs are made to order and each one is different and unique.



Design: Sisley

PRODUCT

Type: Hand Tufting
Construction: Tufting Frame

COMPOSITION

Pile: 100% Botanical Silk (Lyocell)
Yarn Origin: Portugal
Primary backing: 100% Polyester Latex:
100% latex
Backing: 100% Polyester

WEIGHTS AND THICKNESS

Maximum yarn pile height: 18 mm
Total thickness including backing: 20 mm
Pile weight: 4.5 kg/m²
Total weight: 5.5 kg/m²

SIZES

Width: 10.5m Length: No limit

APPLICATION

Rugs with high resistance to wear,
appropriate for residential market or
private areas in the hotel sector.

INSTALLATION

Plain, dry and clean surface.
Overall adhesion or stretched.

OTHER CHARACTERISTICS

Capacity of resistance to light: 5 or
above Colour fastness: 4 or above
Treatment anti-moth: Incorporated
under request Resistance to traffic: High

MAINTENANCE

Vacuum regularly - blot stains
immediately with absorbing white paper
towel until it is dry.
Do not scrub.

We recommend the services of a
professional carpet cleaner.

WASHING INSTRUCTIONS

Do not use bleach / Do not wash in the
washing machine / Do not iron / Do not
dry-clean / Contact specialised cleaning
companies.

CERTIFICATION

Fire Classification - EN 13501-1:2010-
Cfl-s1 certified by LNEC



Sisley

Our rugs are manufactured by hand and will show irregularities.

These irregularities could be due to yarn and colour variations and a combination
of the cut and loop pile or carving techniques used.

Colours can vary from dye batch to dye batch and will appear different in certain lights.

Samples of the chosen design, yarn and colours are recommended as the yarn used is then recorded for the order.

Care and Cleaning details can be found on the website.

All our rugs are made to order and each one is different and unique.

All our designs are available in any length, any shape and up to a maximum of 10mtrs wide, from our standard stock yarns.

Designs in ONE colour (cut & loop the same) .

Designs in TWO colours (cut pile in one & loop pile in another)

In any design, you can mix/twist 3 colours in any yarn, the price remains the same.

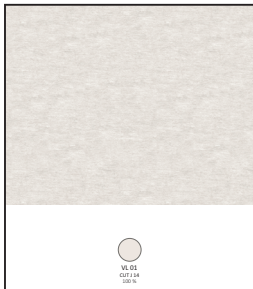
Lead time for orders is 6-8 weeks. Lead time for sampling and colour pom rings is 4-6 weeks.

Lead time for sample requests is 2 weeks.

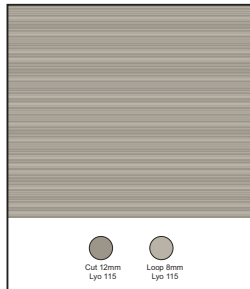
ALL PLUS VAT and DELIVERY. HOME DELIVERY SERVICE, PRICE ON REQUEST.

STAIN REPELLANT FINISH is on request.

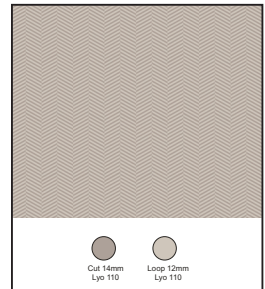
Our collection takes its inspiration from Stephanie's passion for Roses, Lilies and Orchids and all things bright and beautiful from her garden.



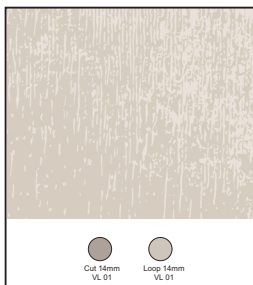
Cartier



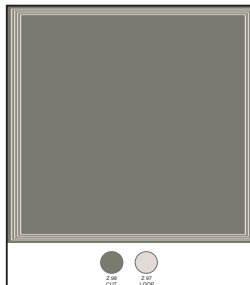
Grimaldi



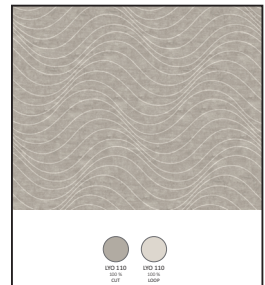
Matisse



Monet



Pissarro



Sisley



Stéphanie Bouquet Ltd.
Oak House, Journeyman's Way, Southend on Sea, Essex SS2 5TF
Email: sales@therugstory.uk
Website: www.therugstory.co.uk